

MA| KA| TU| HTAWM| PLANG|

Tu[aen[meuh] ce] nang] lah[ri] kleum[dak[ka].

k hk hk' g ng h

Tu[aen[meuh] ce] nang] lah[ri] nang] ngon[dak[ka].

c ch j ny y

Tu[aen[meuh] a] nang] lah[ri] duing[dak[ka].

t ht d n s l r

Tu[aen[meuh] ka] nang] mem] moeng] ri] lah[ka].

p hp b m

Tu[aen[meuh] ka] nang] hoeng[hk'a[col] tuih] rang[hk'a[tuh] ka].

v f

Tu[aen[chat] ce] peue] ri], ang[moeng] ri] na[ploeh[guil[ka] lih] neum] hk'ung[ri] na[.

gh ngh jh nyh yh dh nh

bh mh lh

Tu[aen[na] ko[, ang[moeng] ri] na[pleng[duing[dak[ti] na[tuih] jil] hk'a[tuh] ri] na[.

kl gl pl bl

Tu[aen[na] voc] hoeng[ri] na[ang[ri] ploec[a] is[guil[lih].

kv hkv gv ghv hpy

Tu[aen[ce] ko[, pun] ta] leukah[na[kaw] a] htop[. A] seue[ri] vang] sut[ka] na[heul[.

_k _t _n _ng _m _p _c
_s _l _h

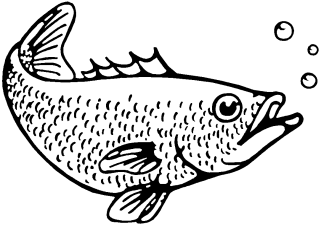
Tu[aen[ce] meuh] ka] maeel pawng[ka] lih] leukah[.

1. Ku[seudim[tu[aen[meuh] ka] nang] lih] ti] seng[ka].

a i e u o aw ae
eu ui

2. Aen[ce] ko[, meuh] a] tu[seudim[tu[hk'a[tuh] na[, a] pawng[pu] ri]. A] meuh] lal[seng[, a] sawn[ri] meuh] ti] tu[.

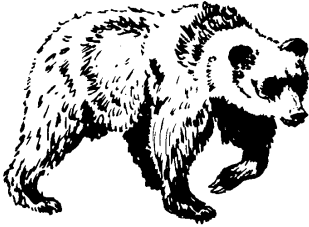
ai ao aeo aee awo awe eue
uui eo oe ue iu



a

ka[

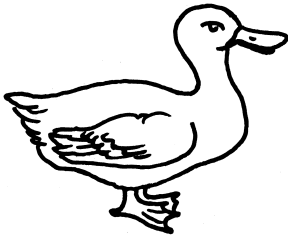
Ka[hk'a] a] ka[.



i

hk'is[

Hk'is[na[mak] a] bil[.



e

pet[

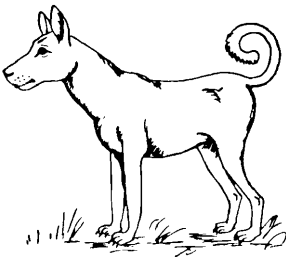
Pet[na[mak] a] ka[.



u

pus[

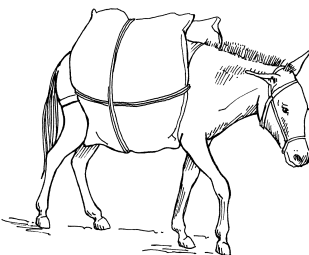
Pus[na[ut[a] nang] hk'i].



o

so[

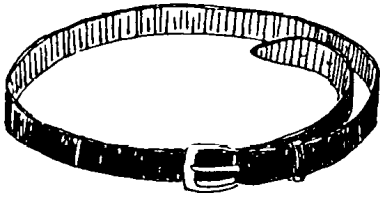
So[pe[na[cang] ko[a] nya].



aw

rawng] law]

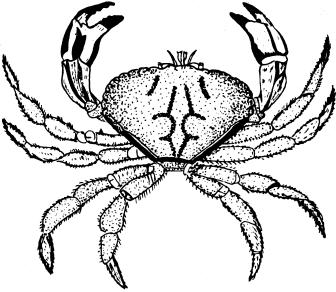
Rawng] law] na[som[a] ngho[.



ae

sae[caet[

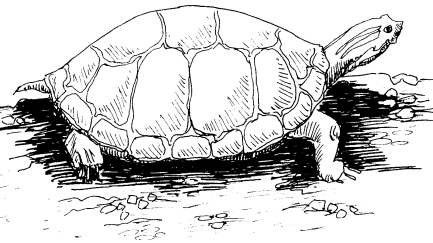
Sae[caet[aen[na] chak[ka] nyawk[.



eu

keutam[

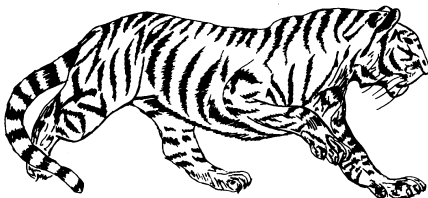
Keutam[ti] ceu] na[heul[seuceng] ka].



ui

a[ruis] rang]

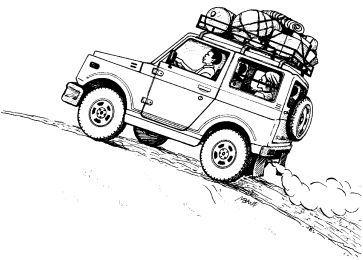
A[ruis] rang] na[sui] sa] ka].



ai

leuvai]

Leuvai] na[lai] ka].



ao

lao] li]

Lao] li] aen[na] seng[laws[ka].



aeo

kaw] maeo]

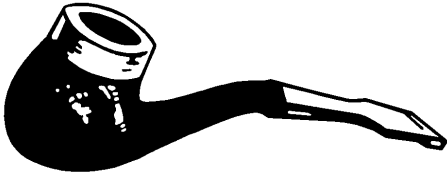
Kaw] maeo] na[ngai[keuting] ka].



aee

a[laee]

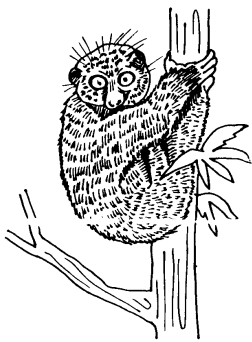
A[laee] na[peul[vae] nyawk[ka].



awo

mawo[

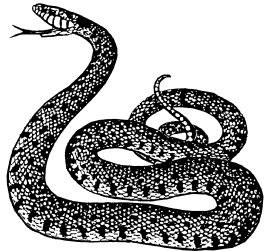
Keulhit[mawo[a[ta[na[lang[nyawk[ka].



awe

nao[nao[hkawe] hkawe]

Nao[nao[hkawe] hkawe] na[it[heun[ka].



eue

seueueng[

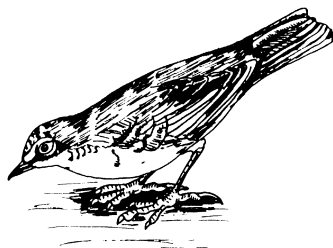
Seueueng[aen[na] sa[hao[ka] nyawk[.



uui

keutui] ruii]

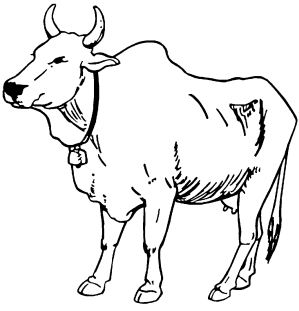
Keutui] ruii] na[eo[a] ri] peun] sum[.



eo

sim[a[ceo[

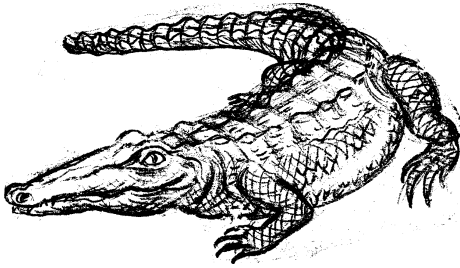
Sim[a[ceo[na[eo[a] ri] saee] pang] keute[.



oe

a[moe]

A[moe] na[cang] ol[a] law].



ue

gue[leuum[

Gue[leuum[na[kue[a] nang] klong[leuum[keuting].



iu

hk'iu[nya]

Nya] na[hpam[ka] hk'iu[a] reu].