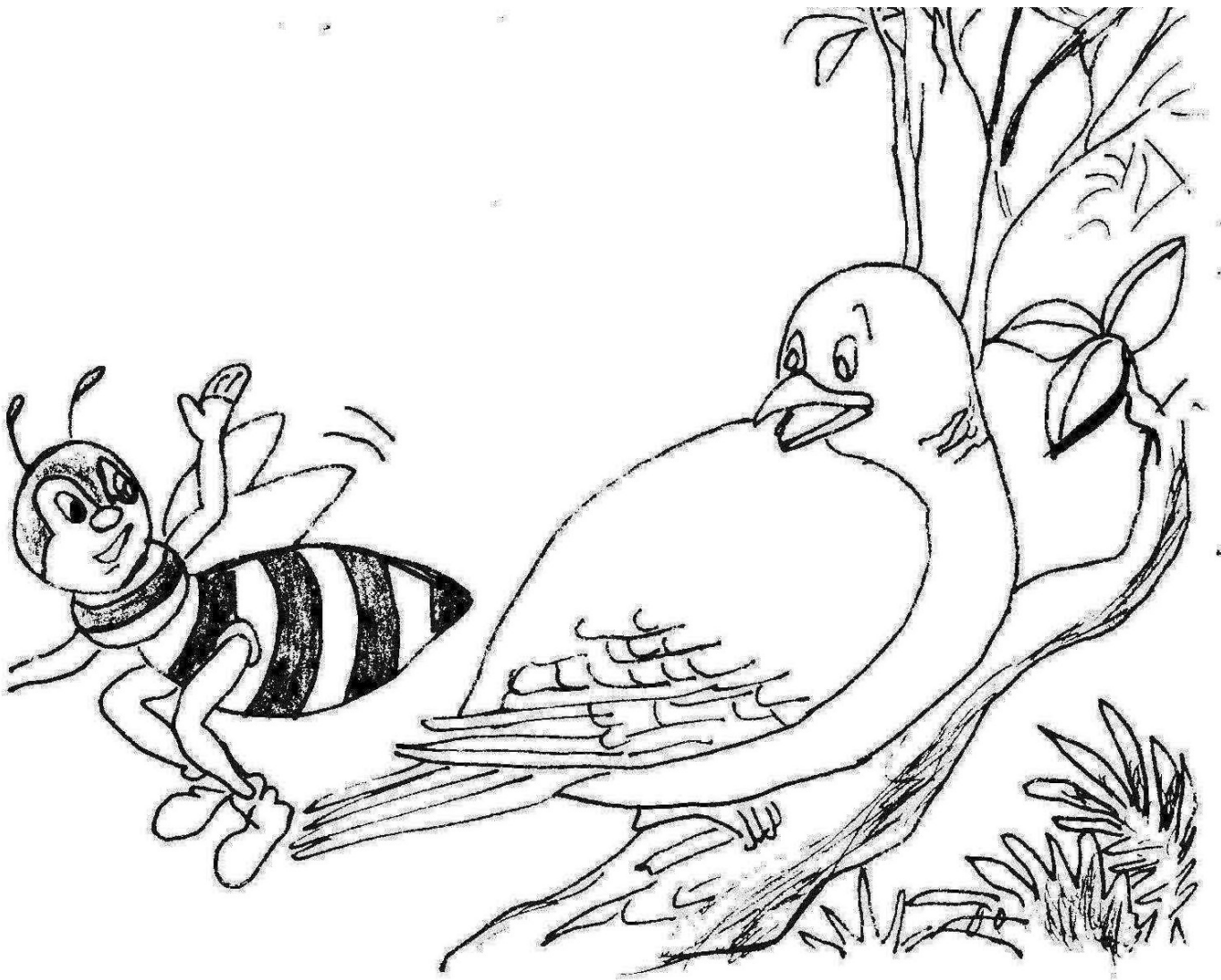


# Puitnui mae' gui'





Muis htawm : Puitnui maeé' gui'  
Cawo' tem' : Aesop's Fables  
Nanghtut : Saeé'la'  
Rup : Aesop's Fables  
Leukah' : Plang  
Yam pleng' : September, 2016

Book name : The Bee and the Dove  
Author : Aesop's Fables  
Translator : Saeé'la'  
Picture : Aesop's Fables  
Language : Plang  
Test edition : September, 2016



# Puitnui mae' gui'



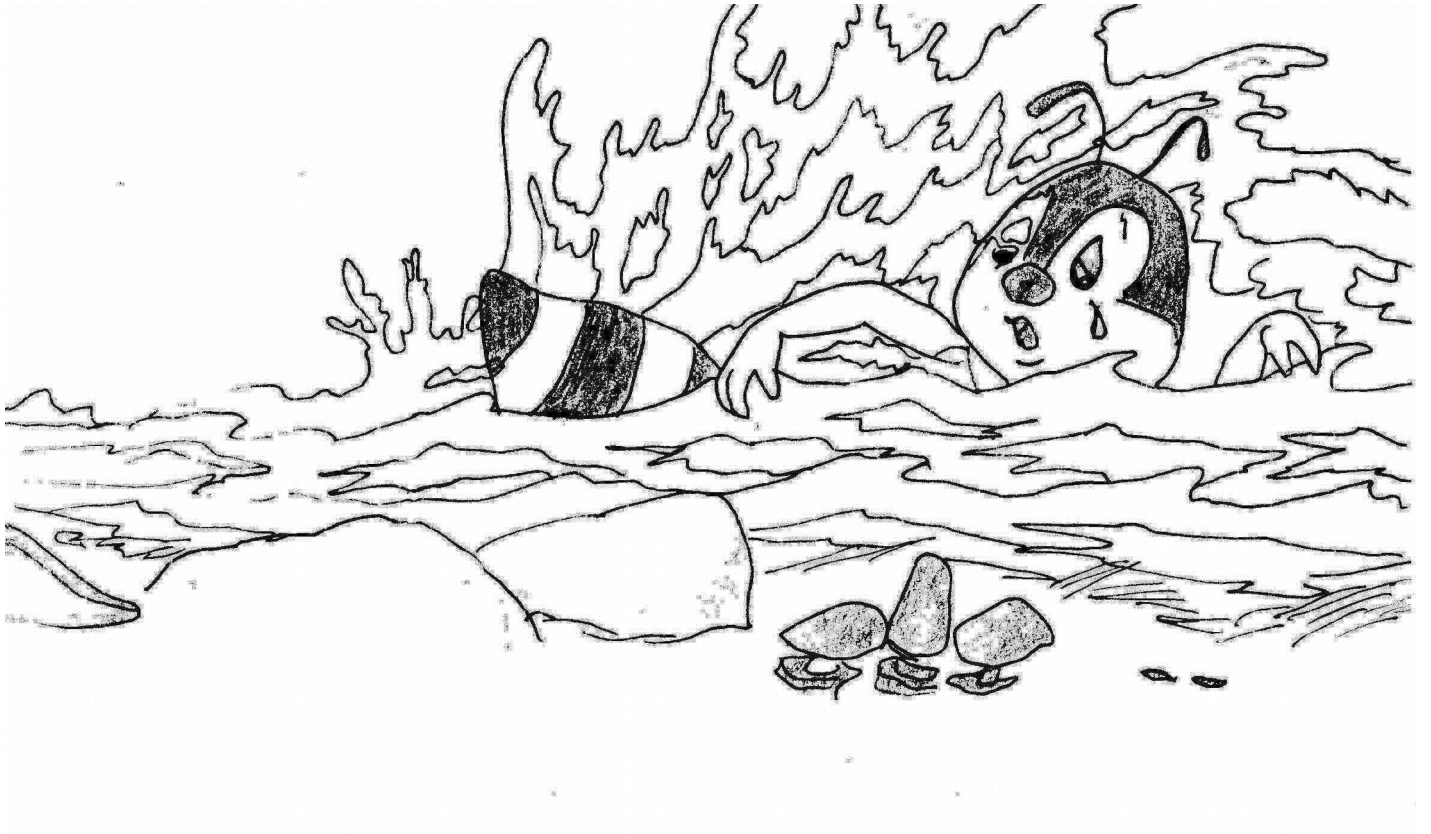
Meuh a yam kang' leng kang' lawo. A kue' ti seunyi, puitnui na' a sum' nyui leuum'. A peul' lih keunam ka klong' na'.



Kopti leum' na' lhaee' reng nyawk' ka, ma  
puitnui na' hk'uic' hk'a'naee leum' na'. A un'  
laee kue' kawl'reng.



A saec' co'ca' ri lah' ri kaw ko' ri yen seumu  
maee' hku' rip na' ce, ku' kuit ka na' a hkuin'  
cang meuh.

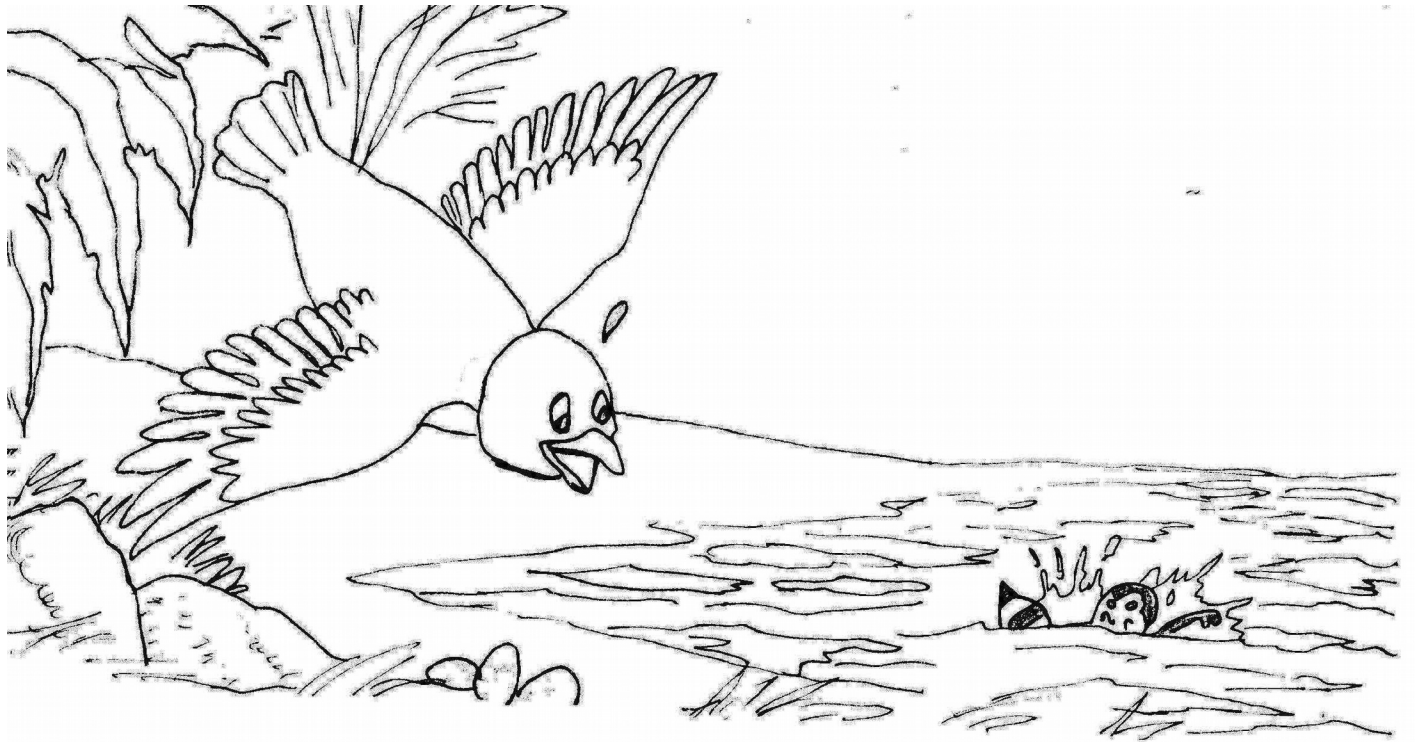


Puitnui aen' a saec' co'ca' ri yeuh sa'nhaw',  
a hkuin' cang pun ri lawt.

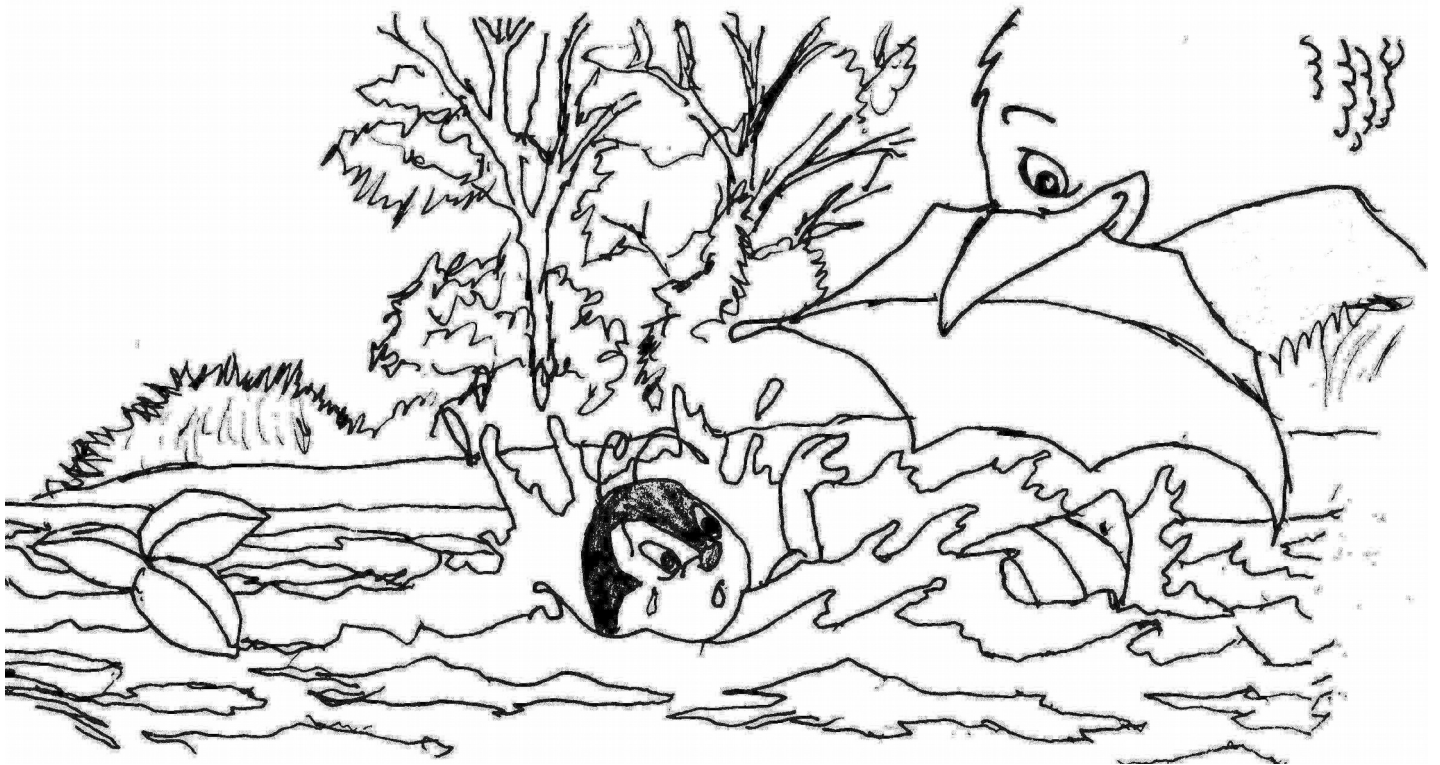




A cu ri ngam' hot' klong' na' heul'.



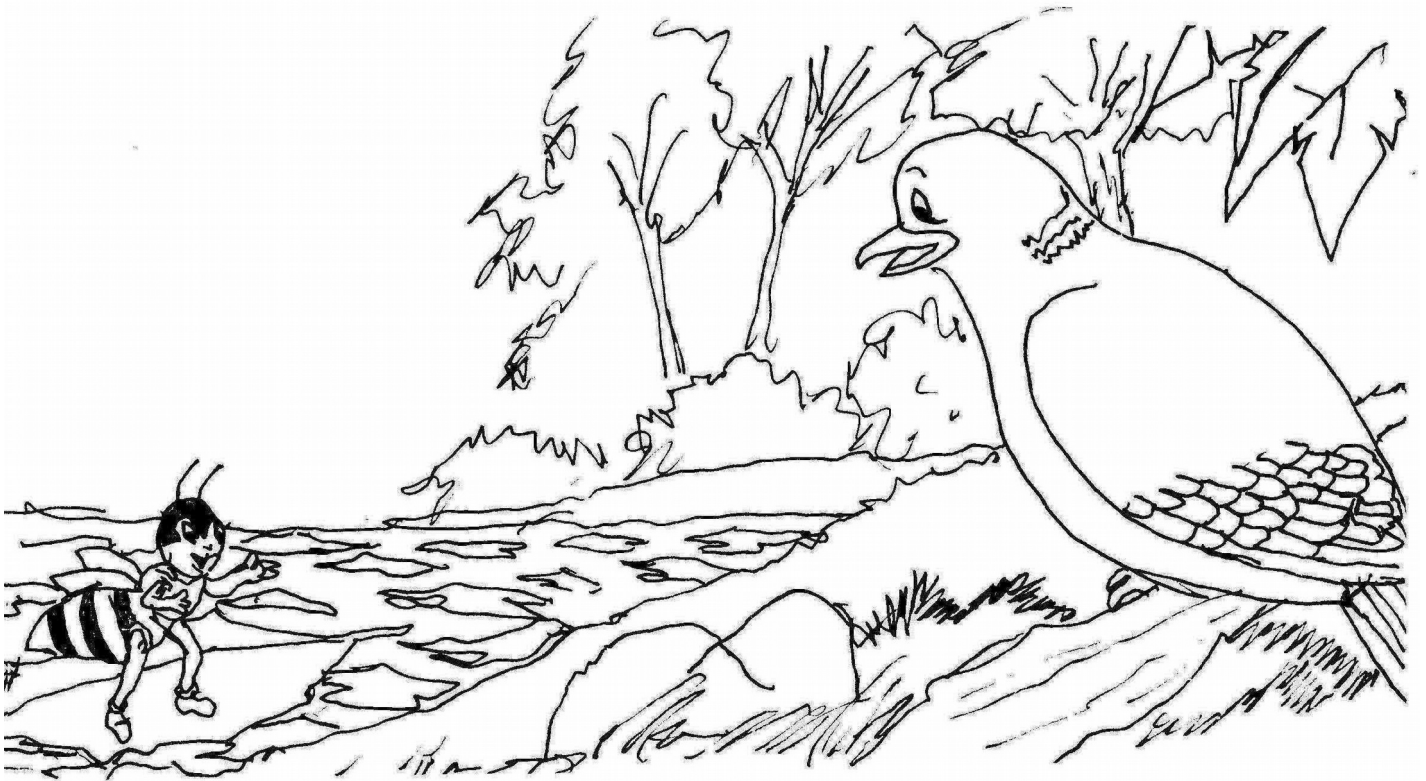
Yam awn' na, gui' ti tu' na' a kaw lih nyui  
leuum' nang klong' na'.



Yam buih lih ka na', a nyu ma puitnui na'  
htae htae. A ut' pang hak' leuum' na'.



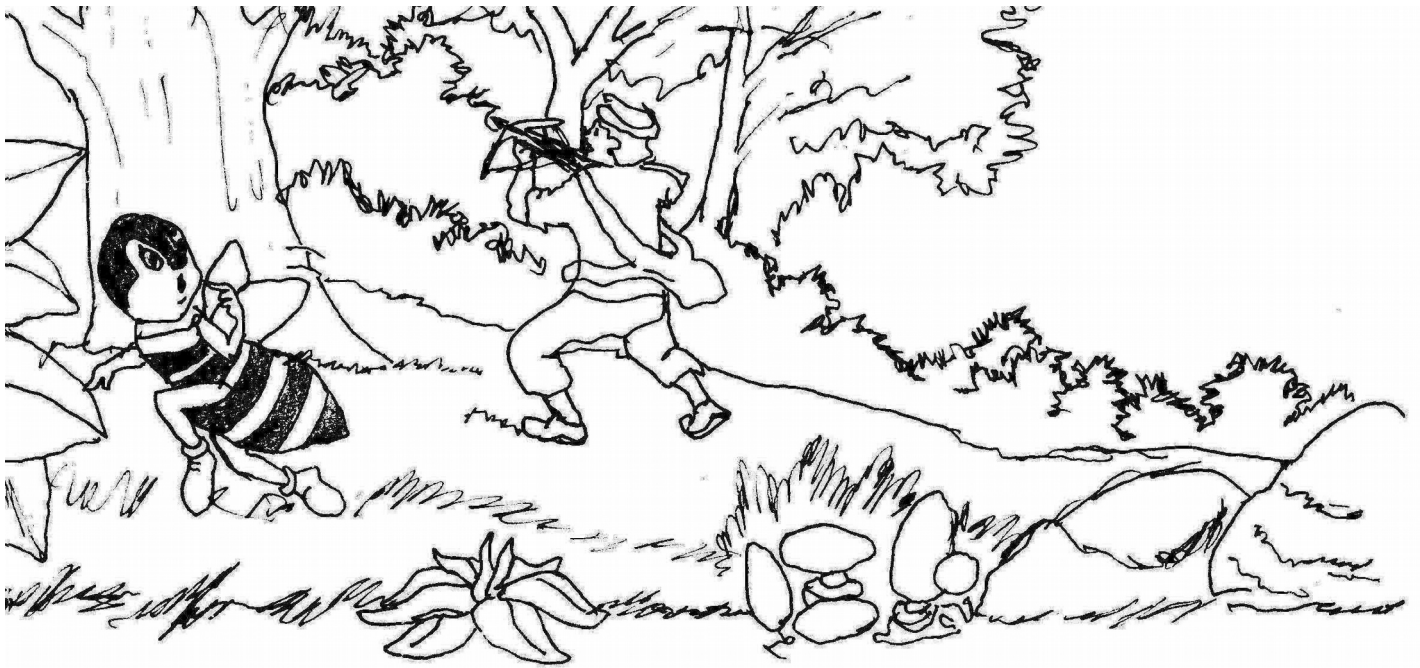
Hawc' gui' na' a heul' tok' lha' hku' ti lha'. A  
ing' tuil' a ri vang ut' ka ma puitnui na'. Ma  
puitnui na' a huk' cot' hk'a' pang ka. A pun ri  
lawt pon yawo.



Ma puitnui na' a lah' a ri gui' na', "Hpaw ui' ca' kaw laee pil mun' kun mi na' saec' ti pok."



A kue' ti seunyi, yam ma puitnui na' puc a ri  
eo' sok ri hk'a na', a nyu peue heul' kawn ti  
peue na' mung' eun ri seuleng kleum' hku' ti  
kleum' na'. Eun kaw peueng' ku' ti ri ceu.

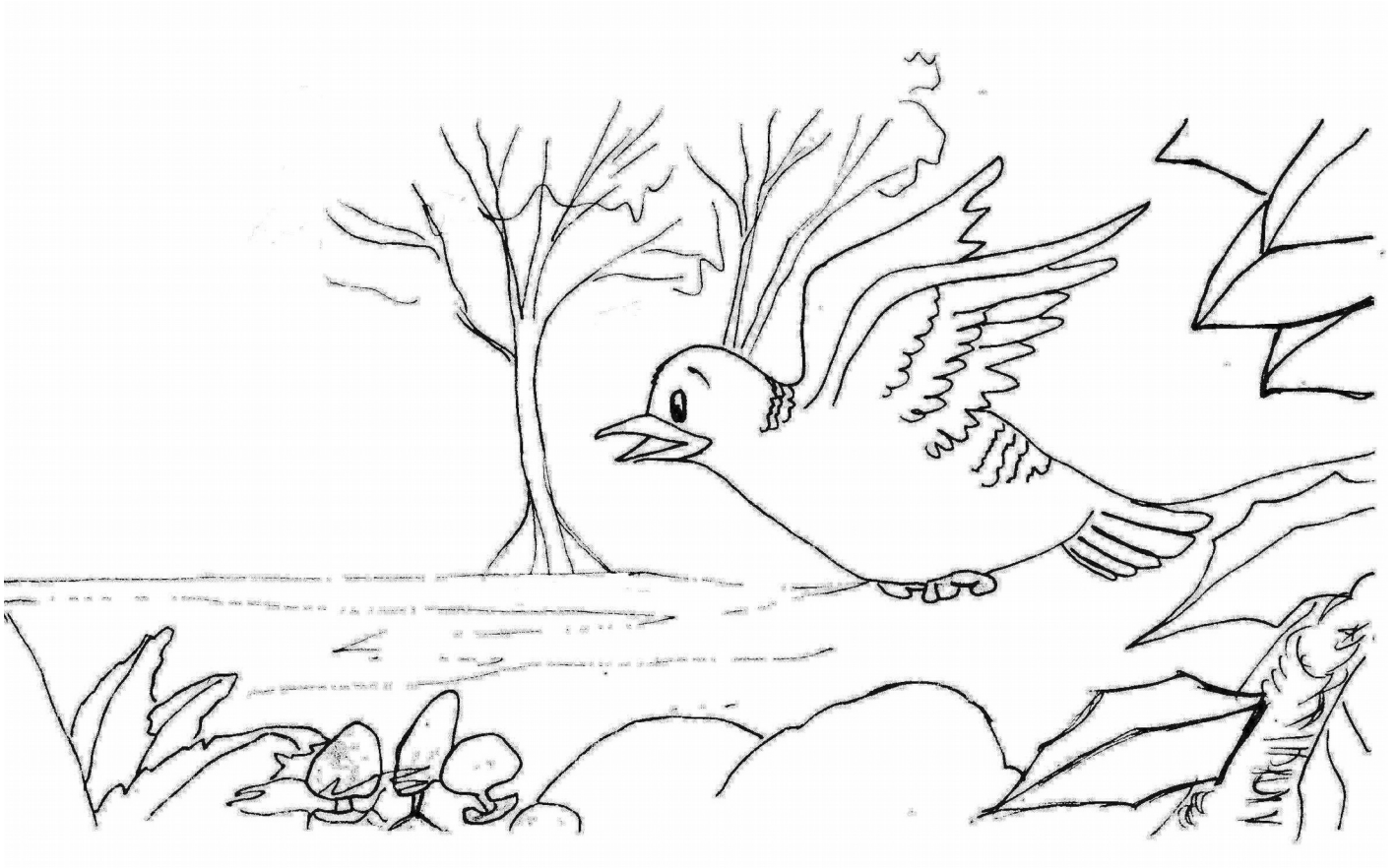


Yam awn' na, ma puitnui na' a ta nyu gui' na'  
cot' a ri kleum' hku' awn' na.

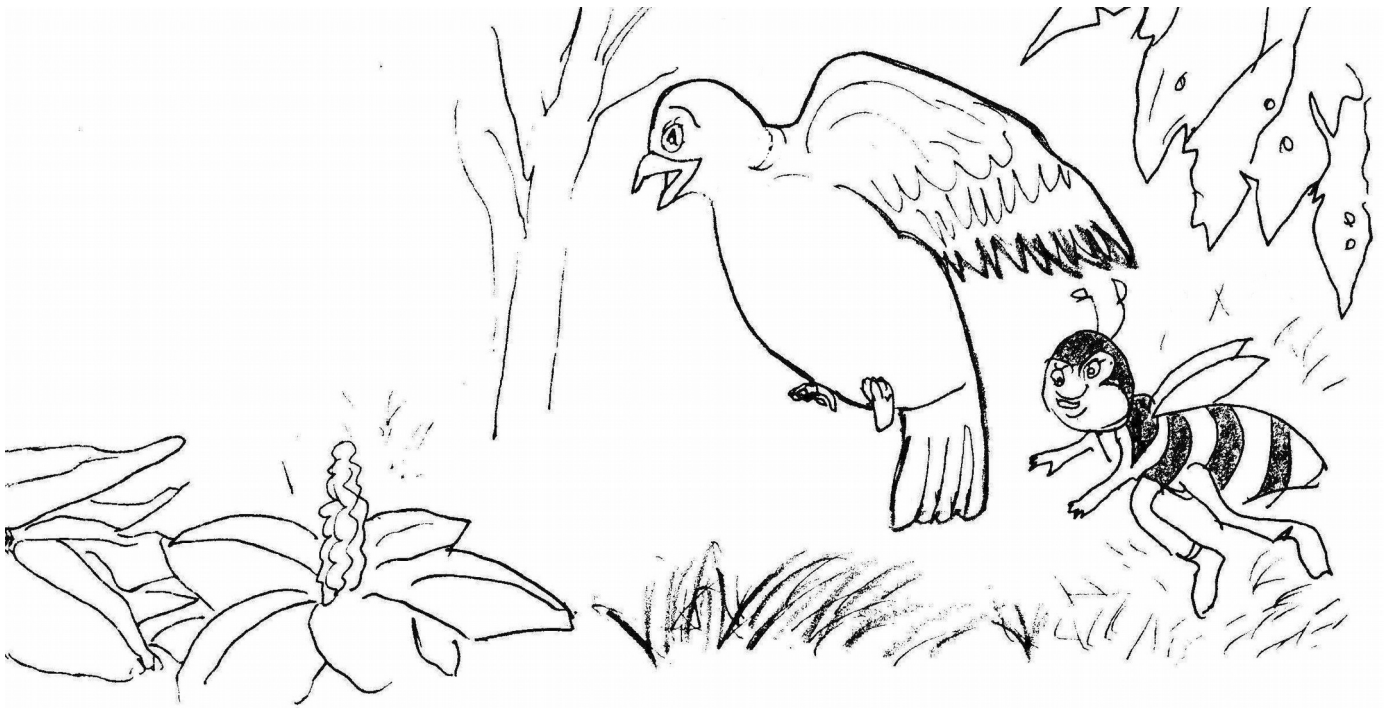


Ma puitnui na' a lih huic' ti' eun a'ta' na'. Eun keulawn' man' tae ak' ri na' hk'uic' pang keute' na'.





Yam awn' a, gui' na' a lawt pon hk'a'yeum  
ku' un' chak' na'.



Seunyi awn' na, ka keut' ri meuh a'mawo  
chak' leumeus' puri mae'e' cang teum'kawm puri  
heul' yawo.

E' lawn meuh peue yeuh ku' chak' ri peue  
ko', ta cang hk'eup' e' hk'a'chak' na' yawo.